



**WP** Petroleum (Shanghai) Ltd.

# Drilling Rig Equipment & Components





**WP** Petroleum (Shanghai) Ltd.

# Drilling Rig Equipment & Components

Mud Pump and Spare Parts

Travelling Blocks

Hooks

Block Hook Units

Swivels

Rotary Tables

DC Motor Driven Drawworks

AC VF Motor Driven Drawworks

Hydraulic Disc Brakes

Eddy Current Brakes

JQH Series Air Winches

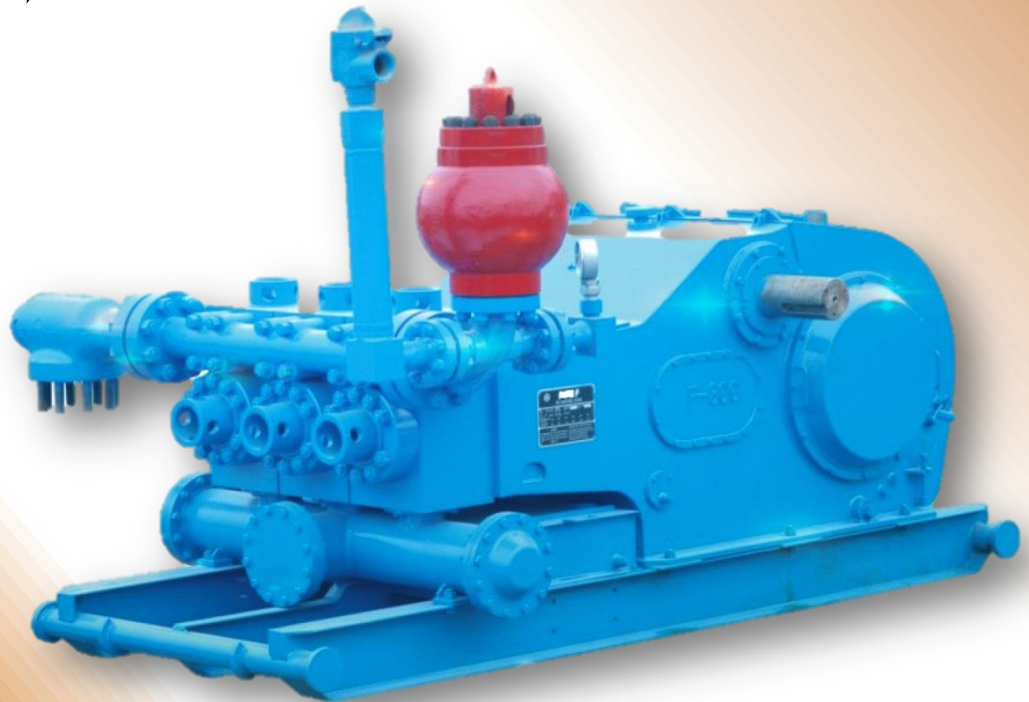
XJFH Series Air Winches



## F SERIES API Spec 7K

Triplex single acting mud pumps  
machined under  
C. Emsco designs, all fluid end parts  
interchangeable for C. Emsco OEM  
pumps.

## F Series Mud pumps





## PZ SERIES API Spec 7K

- Assembled and tested under Gardner Denver designs
- Interchangeable fluid and end parts

## PZ Series mud pump







## HEAVY DUTY oilfield pumps

- Electric drive
- Mechanical drive
- All pumps built for heavy duty oilfield skids.

## Mud pump package





C.Emsco, National, Oilwell,  
Gardner IDECO

C.Emsco.National,Oilwell, Gardner  
and IDECO

full line fluid end parts and  
expendables.

## Mud pump fluid end parts and expendables

- Liners
- Pistons
- Rods
- Valves & seats
- Hydraulic seat pullers
- Crossheads & crosshead guides
- Cylinder heads & valves covers
- Gaskets
- Liner clamp
- Liner cage
- Rod clamp
- Threads Rings
- Valve rings
- Valve pot cover
- Valve guide
- Wear plate





YC SERIES API Spec 8A/8C

- Sheave grooves are medium frequency induction to provide extended life services
- Double-row conical roller individually lubricated
- Interchangeable sheaves and bearing crown block

## YC Series Travelling block





## DG Series Hook

DG SERIES API Spec 8A/8C

Equipped with a hydraulic snubber  
assembly to protect joints when  
breaking out connection.







YG SERIES API Spec 8A/8C

Combination of traveling block and  
hook together reduces overall length  
and can help satisfy the requirements of  
operating top drive.

## YG Series Block Hook Unit





## SL Series Swivel

SL SERIES API Spec 8A/8C

- Double pin ends
- Offer 4" hose connector and swivels according to API Spec 8A/8C, granted to use API monogram.





## ZP Series Rotary table



ZP SERIES API Spec 7K

- Alloy steel pinion and gear
- Steel casing master bushing API standard
- Square kelly or hexagonal kelly as per Varco designs
- Mechanical and electrical independent table drives can be furnished.

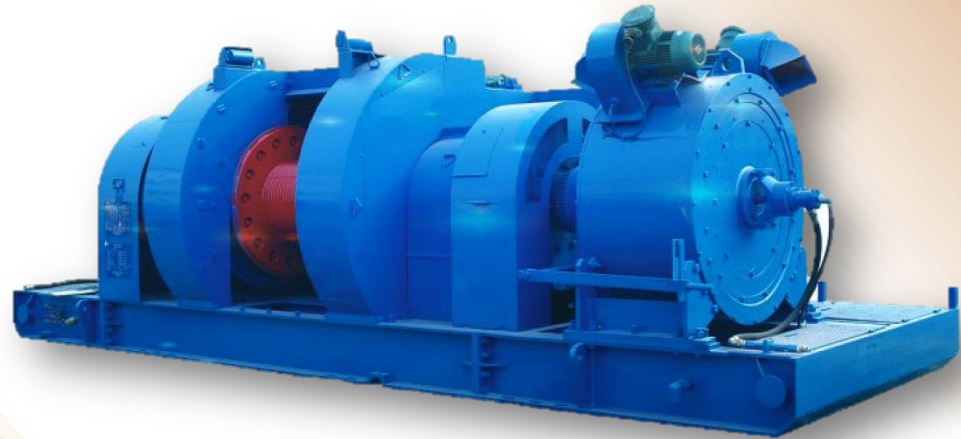




## DC Motor driven drawworks

### JC SERIES API Spec 7K

- Roller bearings
- Alloy steel shafts
- Spiral groove drum
- Low & high-speed ends equipped with a ventilating air tube clutch
- Hydraulic disc main brake is water or air cooled
- Air shift gear and chain driven structure.







## Two Stage Gear Reducer Transmission

- Roller bearings
- Alloy steel shafts
- Spiral groove drum
- Auto feed driller
- Hydraulic main brake disc, water or air cooled
- Dynamic auxiliary brake
- Single shaft drawworks
- Manual shifting-gear
- Pressure lubricated

AC variable frequency motor  
driven drawworks





## Hydraulic disc brake

### Hydraulic & Electrical Disc Brake Systems

- 6- 9 MPa rated pressure
- 18 L/min rated flow of single pump
- 2.2 Kw power motor
- 4x6.3 L accumulator capacity
- 80 L oil tank capacity
- 1 Kw Power of heater
- 2 m<sup>3</sup>/h rated flow of cooling water





## Eddy current brakes

### DS SERIES EDDY CURRENT BRAKE

- 44-110 KNm rated stop torque
- 9-25 KW Max. exciting power
- 4 H Class exciting coil
- Amount of cooling water (190-600 L/min (50-160 GPM))
- Max. temperature of inlet water (42 °C)
- Max. temperature of outlet water (72 °C)
- Weight 5000-14000 Kg

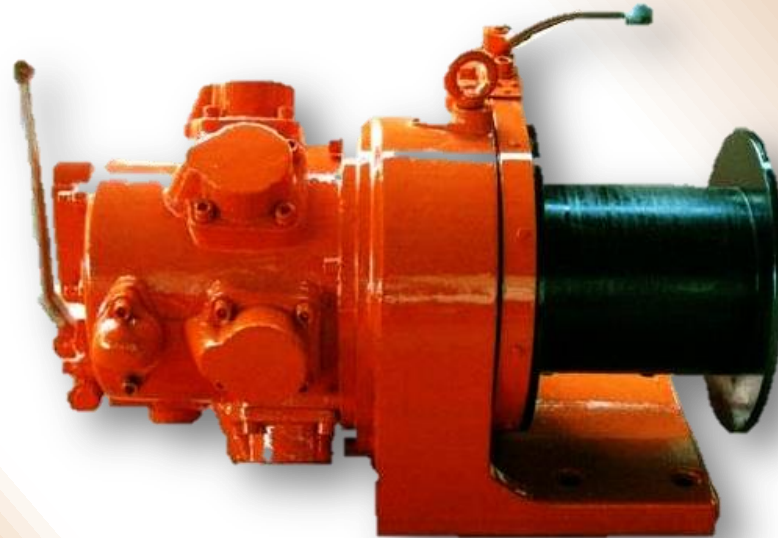




JQH-5 X 48 & JQH-10 X 24

- 6 cylinder/ 2.6 kw plunger air motor driven
- 50 mm plunger stroke
- Single drum
- Manual operation
- 8 Mpa air pressure
- 5 and 10 Rated Pull (kN)
- Roller line capacity 60m

## JQH Series Air Winches







XJFH-3/35 & XJFH-5/35

- Air motor driven
- Drum driven by gearbox
- Compact design and easily operation
- Stepless shifting and safe performance

XJFH series air winches





WPP Petroleum (Shanghai) Ltd.

Headquarters Office SHANGHAI, CHINA

Room 701- Jin Zhong Tower  
680 Zhao Jia Bang Rd  
SHANGHAI 200031  
CHINA

**Business Development Manager:** Tracy SHI

[tracy.shi@wppetroleum.com](mailto:tracy.shi@wppetroleum.com)  
[sales@wppetroleum.com](mailto:sales@wppetroleum.com)

Tel.: **+86 21 64 67 33 11**  
Fax : **+86 21 64 37 11 21**